

**What's On**  
March – June  
2012

# **PALLANT HOUSE GALLERY**



## Pallant House Gallery

Located in the heart of historic Chichester on the South coast, Pallant House Gallery is a unique combination of a Grade One Listed Queen-Anne townhouse and an award-winning contemporary extension, holding one of the most significant collections of Modern British art in the country.

Featuring a regularly changing internationally- important exhibition programme, talks, workshops and tours as well as a specialist bookshop and critically-acclaimed onsite restaurant, Pallant House Gallery is a must-see for any art enthusiast and a day out for all.

### Become a Friend

Enjoy free unlimited access to Pallant House Gallery from as little as £30 per year as well as a host of other benefits such as free copies of the Pallant House Gallery magazine delivered directly to your door, priority booking and a lively Friends' events programme. For more information go to [www.pallant.org.uk](http://www.pallant.org.uk) or telephone 01243 770815

### Keep in touch

You can join our free e-newsletter and we'll send you a monthly update of what's on at the gallery. Visit [www.pallant.org.uk](http://www.pallant.org.uk) to sign up.

You can also follow us at  
[www.facebook.com/pallantgallery](http://www.facebook.com/pallantgallery)  
[www.twitter.com/pallantgallery](http://www.twitter.com/pallantgallery)

Headline Sponsor of the Gallery 2012



Gallery Supporters



### Front cover and opposite page

Keith Vaughan, Musicians at Marrakesh, 1966–70, oil on canvas, Accepted by HM Government in lieu of Inheritance Tax and allocated to Pallant House Gallery from the Estate of Professor John Ball (2011) © The Estate of Keith Vaughan. All rights reserved, DACS 2012

Pallant House Gallery is a private company limited by guarantee under registered no.5045130 (England and Wales) and a registered charity for England and Wales under no.1102435.

## What's On

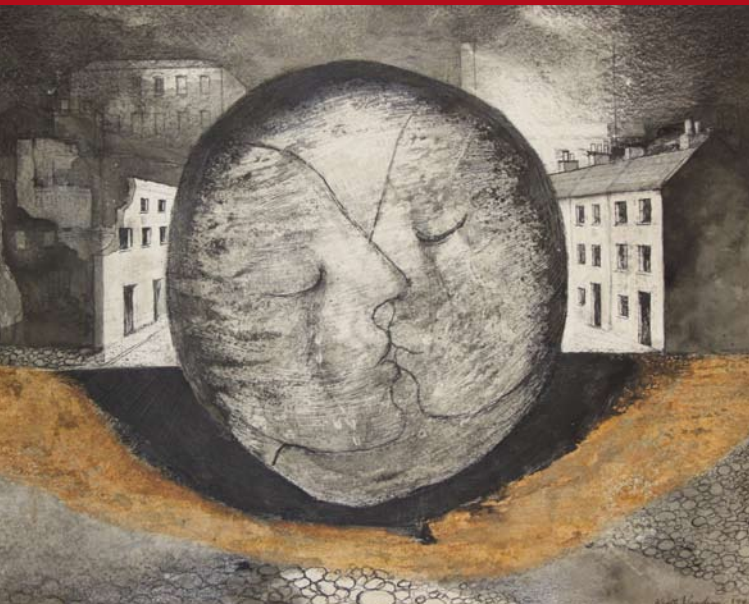


### Exhibitions

Main Galleries	2–5
De'Longhi Print Room	6–7
Permanent Collection	8
Studio	9

### Events

Talks	10–13
Tours	14–15
Workshops	16–17
Children's Workshops	18–19
Special Events	20



## Keith Vaughan: Romanticism to Abstraction

10 March – 10 June

An exhibition to mark the centenary of the birth of the British painter Keith Vaughan (1912–1977). Born in the nearby Sussex village of Selsey, Vaughan was one of the most significant artists of his generation, best-known for his painterly depictions of the male nude in the landscape.

Largely self-taught, Vaughan formed friendships with the painters Graham Sutherland and John Minton during the war, becoming a leading 'Neo-Romantic' artist. His reputation reached its height in the late 1950s and early 1960s, culminating in a retrospective at the Whitechapel in 1962 at which Director Bryan Robertson described his work as 'some of the best done in the country in the 20th century'.

Keith Vaughan, *Night in the Streets of the City, 1943*, Indian ink, gouache and crayon on paper, Private Collection, West Sussex, © The Estate of Keith Vaughan



The exhibition will chart the development of the artist's work from his early beach scenes of the 1930s and the romanticism of his wartime illustrations for poetry and literature, to his painterly depictions of the male figure and landscapes and his later move towards abstraction.

Featuring drawings, studies and major paintings from across his career, it will provide a comprehensive overview of the artist's life and work.

Sponsored by

**KENWOOD**  
CREATE MORE

Supported by

**The Keith Vaughan  
Supporters' Circle**

The Finnis Scott  
Foundation

With thanks to

Offer Waterman & Co



## The Art of Chichester Festival Theatre: A Celebration

3 March – 3 June

To mark the Chichester Festival Theatre's 50th anniversary this exhibition, curated and designed by renowned scenographer Professor Pamela Howard, celebrates how visual theatre artists responded to the challenge of designing for the first purpose-built thrust stage theatre in the UK.

A selection of models, drawings, paintings, costumes and designs from the early productions will be exhibited for the very first time, assembled in a specially-constructed installation of the theatre park in the galleries of Pallant House Gallery.

The Art of Chichester Festival Theatre Supporters

THE  
**LINBURY**  
TRUST

**The Art of Chichester  
Festival Theatre  
Supporters' Circle**



## David Dawson: Working with Lucian Freud

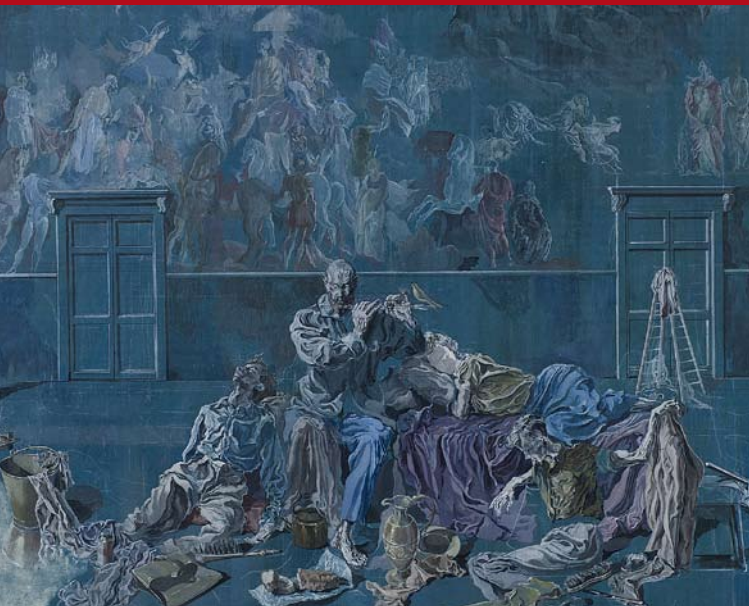
28 January – 20 May

An extraordinary insight into the notoriously private world of the late great painter Lucian Freud through the eyes of his model and studio assistant David Dawson.

Dawson's unique access has led to the development of a portfolio of photographic portraits that have become iconic in their own right. This exhibition brings together some of Dawson's intimate studio photographs and places them alongside his own rarely-seen paintings and pieces by Freud.

Supported by

**PALLANT  
HOUSE  
GALLERY**  
Friends



## Robin Ironside: Neo-Romantic Visionary

28 February – 22 April

An exhibition celebrating the centenary of the visionary artist Robin Ironside (1912–1965). A self-taught painter of Surrealist fantasies, Ironside was also a designer for the theatre, respected art critic and curator, who became Assistant Keeper at the Tate Gallery and Assistant Secretary for the Contemporary Art Society. This will be the first museum exhibition of the artist's work for over 40 years.  
*De'Longhi Print Room, Free entry*



## Ron King: On and Off the Page

24 April – 18 June

Prolific printmaker and book artist Ron King is best known for founding the Circle Press in 1967, a private press formed to design, print and distribute artists' books. Since then he has collaborated with more than 100 artists, writers and poets to produce an extensive body of work unique in its variety and quality. This exhibition, which marks King's 80th birthday, looks back over the artist's career both 'on and off the page' including some of his best known artists' books as well as examples of his painting and sculpture.

*De'Longhi Print Room, Free entry*



## Modern British Art: The Permanent Collection

On show throughout the year

Pallant House Gallery boasts one of the best collections of Modern British art in the UK. Donated over the past thirty years, the collections tell the story of a number of individuals, all passionate collectors of art who generously donated their lifetimes' labours to the Gallery for the benefit of the public.

The Collections include important works by amongst others: Andrews, Auerbach, Blake, Bomberg, Caulfield, Freud, Hamilton, Hodgkin, Nicholson, Moore, Paolozzi, Piper, Sickert and Sutherland.



### **International Sketchbook Project**

28 February – 25 March

An extraordinary collaboration between young people from different parts of the world in the form of a collection of tiny personal home-made sketchbooks.

### **Ian Sherman: Artefacts from the Contrarium**

27 March – 29 April

The first solo studio exhibition of artist and Partner in Art Ian Sherman featuring his technology-influenced paintings and assemblages.

### **A Tale of Twinned Cities: Chapter 3**

1 May – 27 May

Friends of Chartres and Pallant House Gallery collaborate for the fourth time with the return of the School Arts Competition.

### **Jon Adams**

29 May – 3 June

An exhibition of recent work by Portsmouth-based Outsider artist, Jon Adams.

---

## THURSDAY EVENING TALKS

---


 *Online Booking available*

### **Virginia Ironside on Robin Ironside**

Thursday 22 March, 6pm

A self-taught painter of Surrealist fantasies, designer for the theatre and writer on art, Robin Ironside was, according to his niece, the agony aunt and writer Virginia Ironside: 'thin, lively, wiry, original and obsessive' with a penchant for hard living (he dabbled in mescaline and smoked 60 cigarettes a day). She introduces her 'eccentric relation' to coincide with the centenary exhibition in the De'Longhi Print Room.

*Talk + wine: £12 (Friends £10.50)*


*Talk only: £8.50 (Friends £7, Students £7.50)* 

### **Pamela Howard: Designing for the Stage**

Thursday 29 March, 6pm

Professor Pamela Howard OBE, curator and designer of the exhibition *The Art of Chichester Festival Theatre: A Celebration*, has worked as a stage designer and scenographer for over 40 years. She will draw on her extensive experience from her work as a head-dress maker for 'The Broken Heart' at Chichester Festival Theatre in 1962, to realising over 200 productions at major national and regional theatres in the UK, Europe and USA.

*Talk + wine: £12 (Friends £10.50)*


*Talk only: £8.50 (Friends £7, Students £7.50)* 

### **Gerard Hastings on Keith Vaughan's Journals**

Thursday 12 April, 6pm

Keith Vaughan's journals which he kept throughout his life have become as celebrated as his artwork. First published in 1966 they offer, in the words of his publisher Alan Ross, 'a self-portrait of astonishing honesty: devoid of disguise in any shape or form, or hypocrisy.' Gerard Hastings, author of a new book on Vaughan's final moving journal, explores one of the greatest pieces of confessional writing of the twentieth-century.

*Talk + wine: £12 (Friends £10.50).*

*Talk only: £8.50 (Friends £7, Students £7.50)* 



### **Catherine Lampert: Lucian Freud and his Circle**

Thursday 19 April, 6pm

The late great painter Lucian Freud was a central character in the vibrant scene of post-war British figurative artists. Curator and writer Catherine Lampert explores the work of Freud and his contemporaries such as Andrews, Auerbach, Bacon, and Coldstream.

*Talk + wine: £12 (Friends £10.50)*

*Talk only: £8.50 (Friends £7, Students £7.50)* 🍷

### **Robin Child: Keith Vaughan and the Dynamic of Brokenness**

Thursday 3 May, 6pm

Born in the nearby Sussex village of Selsey, Vaughan was one of the most significant artists of his generation, best-known for his painterly depictions of the male nude in the landscape. Robin Child considers Vaughan's work in relation to the classical tradition and his remarkable artistic technique using gouache and oil paint.

*Talk + wine: £12 (Friends £10.50)*

*Talk only: £8.50 (Friends £7, Students £7.50)* 🍷

### **David Dawson in conversation with Barnaby Wright**

Thursday 10 May, 6pm

The studio assistant, model and friend of Lucian Freud for 20 years, David Dawson's intimate photographic portraits offer a unique insight into the world of the painter. He will discuss his work and intimate relationship with Freud in conversation with Dr Barnaby Wright, Daniel Katz Curator of 20th Century Art at the Courtauld Gallery.

*Talk + wine: £12 (Friends £10.50)*

*Talk only: £8.50 (Friends £7, Students £7.50)* 🍷

### Frances Spalding: Prunella Clough

Thursday 24 May, 6pm

A good friend of painter Keith Vaughan, Prunella Clough (1919–1999) was one of the best and most original artists to emerge in the second half of the twentieth century. Art historian, critic and biographer Frances Spalding celebrates Clough's outstanding contribution to British art, exploring the key themes and inspirations that informed the artist's work.

*Talk + wine: £12 (Friends £10.50)*

*Talk only: £8.50 (Friends £7, Students £7.50)* 🍷

### Charles Darwent: Mondrian and Nicholson

Thursday 31 May, 6pm

In 1938 the Dutch abstract artist Piet Mondrian moved to London at Ben Nicholson's invitation, where the two worked in neighbouring Hampstead studios at the centre of an international community of avant-garde artists. Art critic and author of a new book on Mondrian, Charles Darwent explores the largely untold relationship between Piet Mondrian and Ben Nicholson during the 1930s when the two artists were leading forces of abstract art in Europe.

*Talk + wine: £12 (Friends £10.50)*

*Talk only: £8.50 (Friends £7, Students £7.50)* 🍷

### Ron King

Thursday 14 June, 6pm

Prolific printmaker and book artist Ron King is best known for founding the Circle Press in 1967, a private press formed to design, print and distribute artists' books. Since then he has collaborated with more than 100 artists, writers and poets to produce an extensive body of work unique in its variety and quality. To coincide with his exhibition in the De'Longhi Print Room, he will talk about his life and career.

*Talk + wine: £12 (Friends £10.50)*

*Talk only: £8.50 (Friends £7, Students £7.50)* 🍷




---

## FREE ARTWORK OF THE MONTH TALKS

---

Learn more about a work from the Collection in these free monthly talks. No need to book, just meet at reception.

**The Fool from King Lear, 1950, by Leslie Hurray**

Wednesday 28 March, 11.30am

**Gwen Ffrangcon-Davies in 'The Lady with the Lamp', 1932–34, by Walter Sickert**

Wednesday 25 April, 11.30am

**Portrait of Richard Peckham, c.1740, by Thomas Hudson**

Wednesday 30 May, 11.30am

**Glacier, c.1949, by Wilhemina Barns Graham**

Wednesday 27 June, 11.30am

Find the accompanying Artwork of the Month Workshops on page 16

---

## EXHIBITION TOURS

---

### **Curator's Tour: Keith Vaughan**

Thursday 5 April and Wednesday 18 April, 10.30am

An opportunity to find out more about the life and work of Selsey-born painter Keith Vaughan with Simon Martin, Head of Curatorial Services at Pallant House Gallery and the curator of 'Keith Vaughan: Romanticism to Abstraction'.  
*£8 (£4.50 students)*

### **Exhibition Tour: The Art of Chichester Festival Theatre**

Wednesday 9 May, 2pm

An opportunity to find out more about how visual theatre artists responded to the first purpose-built thrust stage theatre in the UK with Danielle Lockwood, Assistant Curator of the Art of Chichester Festival Theatre exhibition.  
*£8 (£4.50 students)*

---

## FREE HIGHLIGHTS OF THE COLLECTION

---

The perfect introduction to the Pallant House Gallery collections: A free tour led by knowledgeable Gallery Guides. Every Saturday at 2pm. Please meet at reception. Free with Gallery admission. No booking required.

---

## FREE THEMED TOURS OF THE COLLECTION

---

Discover a new perspective on familiar works with a themed guided tour every Thursday at 5.15pm. Please meet at Reception. Free with Gallery Admission. No booking required.

### **Gender and Identity: Artists, Models and Muses**

5 April / 7 June

Discover how gender and identity have shaped the artists, models and muses connected with the Collection.

### **Pop Art and the Swinging Sixties**

12 April / 14 June

Find out more about the revolution in society in the 1960s heralded by British Pop Art.

**Collectors and Collecting**

19 April / 21 June

Learn about the individuals behind the Gallery's permanent Collections.

**300 Years: The Eighteenth Century House  
Fine Arts and Furnishings**

26 April / 28 June

Learn about the history of Pallant House, one of the finest examples of a Queen Anne townhouse in the country, and its historic collection.

**Portraits: Image and Identity**

22 March / 24 May

From nudes to buttoned-up 18th century aristocrats, explore the people behind the paintings.

**Creative Liaisons**

29 March / 30 May

Delve into the true stories of love, friendship, affairs and liaisons in the personal stories of the artists in the collection.

**Landscape and Modernity**

1 March / 3 May

Discover how different artists have responded to this time honoured theme.

**Still Life: The Language of Objects**

8 March / 10 May

The humble still life always reveals more than first appearances, explore how it has been used as a vehicle for artistic innovation.

**300 Years: The Architecture of Pallant House Gallery  
Historic and Modern**

15 March / 17 May

Explore the contrasting architecture and histories of the house and gallery in this new tour.

---

## ARTWORK OF THE MONTH WORKSHOPS

---

Book early as places are limited. Telephone reception or refer to [www.pallant.org.uk](http://www.pallant.org.uk) for details of materials required.

### **The Fool from King Lear, 1950, by Leslie Hurray**

Wednesday 28 March, 1–3pm

Explore pattern and colour using found objects with frottage and simple printing techniques. You will then adapt and refine these techniques and experiment to create a final composition; this could be a costume design or a set design or both, and could be in 2D or 3D. £8

### **Gwen Ffrangcon-Davies in 'The Lady with the Lamp', 1932–34, by Walter Sickert**

Wednesday 25 April, 1–3pm

This workshop will take inspiration from the rich colour and tonal qualities of this work and will focus on the possibilities of using pattern in painting. We will be exploring colour mixing to arrive at a variety of rich tones. £8

### **Portrait of Richard Peckham, c.1740, by Thomas Hudson**

Wednesday 30 May, 1–3pm

Explore the rich, vibrant and exotic nature of this portrait. We will begin by creating some short studies, which could then be either extended or used to make a final piece. You will be encouraged to work in oil pastel and/or chalk pastel, using rich, vivid colour on a pre-prepared, coloured ground. £8

### **Glacier, c.1949, by Wilhemina Barns Graham**

Wednesday 27 June, 1–3pm

Explore the abstract qualities of this work through the interpretation of landscape forms. We will be using washes of colour, overlaying of tissue paper and fine pen work to arrive at a finished work. £8

---

## SUNDAY ART CLASSES

---

Telephone reception or refer to [www.pallant.org.uk](http://www.pallant.org.uk) for details of materials required Please book early as places are limited.

### **Life Painting based on Keith Vaughan.**

Sunday 1 April, 1–4pm

Composite nude figure pieces or assemblies form a small but important part of Vaughan's work. This workshop will begin with quick drawings from the male nude, which will be used to inform an assembly painting, referring to the style and techniques of the artist. £11

### **Abstracting the Landscape**

Sunday 22 April, 1–4pm

Taking ideas from the shapes, designs and the colours of the Sussex landscape found in the work of Keith Vaughan you will create your own abstracted composition based on an image of a landscape of your choice. £11

### **Figure and Space**

Sunday 13 May, 1–4pm

Working from poses by a life model, create a composition in which human figures are set within an imaginary space. Basing your ideas on Keith Vaughan, look at positive and negative shapes relating to the body and explore ways in which the human form can dominate or be absorbed into its surroundings. £11

### **Creativity In Creases:**

#### **An introduction to the world of the artist's book**

Sunday 27 May, 1–4pm

Explore some of the techniques used to create unique paper constructions and artists' books, from simple cut and fold techniques (as used in Ron King's 'Alphabet II') to paper engineering, alternative approaches to binding and simple book construction. Finally, use and develop these skills to design and produce your own unique artist's books. £11

---

## CHILDRENS WORKSHOPS

---

Booking essential as places are limited

### **All the World's a Stage**

Saturday 21 April, 10.15am – 12.15pm

Be inspired by the Art of Chichester Festival Theatre exhibition and make your own 3d proscenium stage, complete with scenery and characters, using cardboard and collage materials. *(8+ years) £8 per child*

### **A Cabinet of Curiosities for our Age**

Saturday 12 May, 10.15am – 12.15pm

In the 18th century collectors kept their treasures or curiosities in special cabinets. What would you put in your cabinet? Come and make a miniature cabinet of curiosities and fill it with your ideas of what would be precious to you. *(8+ years) £8 per child*

### **Cut, Fold and Behold!**

Saturday 26 May, 10.15am – 12.15pm

Learn some different ways to cut and fold paper and how to make your own pop-ups. Then put all these ideas together to make your own pop-up book in this easy-to-follow creative workshop based around the exhibition Ron King: On and Off the Page. *(5–8 years, Children must be accompanied by a parent/carer) £8 per child*



## CHILDREN'S HOLIDAY WORKSHOPS

Booking essential as places are limited

### Chick, chick, chicken

Tuesday 3 April, 10.15am – 12.15pm  
and repeated 1.15pm – 3.15pm

Come and make fun Easter chick masks using any colours and shapes you find in the paintings at the Gallery as inspiration. A creative family workshop for children of all ages. *(Children aged 8 and under must be accompanied by parent/carer) £3 to cover materials*

### Inky Fingers

Wednesday 11 April, 10.15am – 12.15pm  
and repeated 1.15pm – 3.15pm

Using vivid, translucent inks and layered rubbings of surfaces, create your own amazing mixed-media paintings inspired by work in the gallery. *(8 + years) £3 to cover materials*

### **Pallant Prom: Aliksandr Muzykantau**

Saturday 31 March, 12 noon

This month's recital is given by Aliksandr Muzykantau of the Royal College of Music's Recital Class who is in the final stage of training before embarking on a career as a professional recitalist.

*£5. Friends free but any voluntary contributions towards expenses will be appreciated.*

### **In 'Thrust' We Trust**

Saturday 14 April, 11am (The Steven Pimlott Education & Rehearsal Building, Chichester Festival Theatre)

On 3 May 1960 Dr Tyrone Guthrie, celebrated director and theatrical impresario, gave a lecture in Chichester's Assembly Room advocating a thrust stage for Chichester's 'Theatre for the South of England'. This is a dramatic rendition of that lecture, followed by a short forum to assess the legacy of his inspiration with International Theatre Designer, Pamela Howard.

*£5 (Concessions £3). Book through the CFT Box Office 01243 781312.*

### **The Crafty Art of Designing for 'Thrust' with Pamela Howard, OBE**

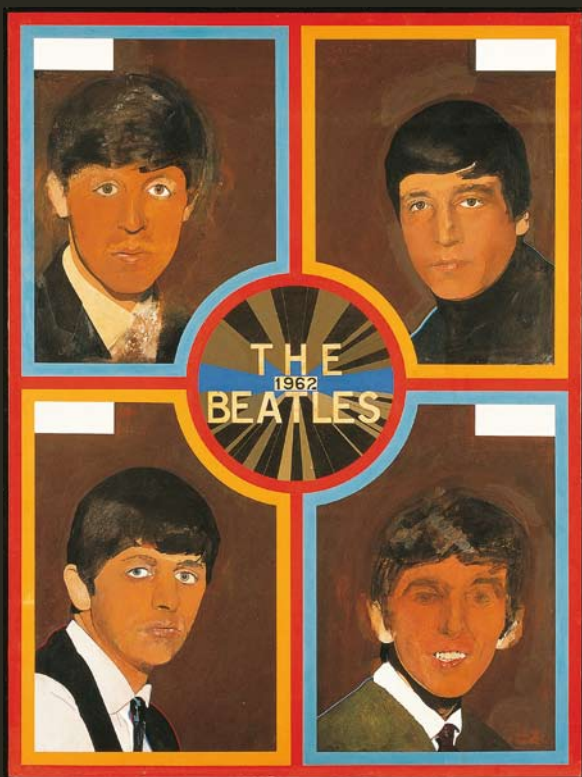
Saturday 14 April, 2pm – 4.30pm (Pallant House Gallery)

From 'sight lines' to perspective and from scaling to positioning, the Chichester 'thrust' stage threw a host of new challenges to theatre designers in 1962. As a young designer and director, Pamela Howard witnessed the evolution of her art with the likes of Ralph Koltai and Stefanos Lazaridis. Join Pamela on the designers' guide to the The Art of Chichester Festival Theatre exhibition and then participate in a scenography masterclass. This will be a practical workshop for professionals and enthusiasts in scenic design.

*£15 (includes entry to 'In Thrust we Trust'). Book through the CFT Box Office 01243 781312).*

# PETER BLAKE

## POP MUSIC



**Coming Soon**

23 June – 7 October 2012

# Visitor Information

## Event Booking Information

Telephone 01243 774557, [info@pallant.org.uk](mailto:info@pallant.org.uk), [www.pallant.org.uk](http://www.pallant.org.uk)  
9 North Pallant, Chichester, West Sussex PO19 1TJ  
Public booking opens on Saturday 3 March

## Opening Hours

Tuesday–Saturday	10am – 5pm
Thursdays	10am – 8pm
Sundays, Bank Holidays	11am – 5pm
Monday	Closed (except Bank Holidays)

## Admission (Includes all exhibitions and the Collection)

Adults	£8.25 (£7.50 without Gift Aid)
Children	£2.30
Family	£18.70 (£17 without Gift Aid)
Students	£4
Friends	Free
Tuesdays	All tickets half price
Thursday Evenings (5–8pm)	Free

**Access** A dropping off bay directly outside, blue badge holder parking, street level entrances and lift access to all floors. Wheelchairs are available. **By Train** Direct from London Victoria, Brighton, Portsmouth and Gatwick Airport. **By Car** M27 and A27 link Hampshire, Sussex and Kent across the coast and the M3 and A3 from London

